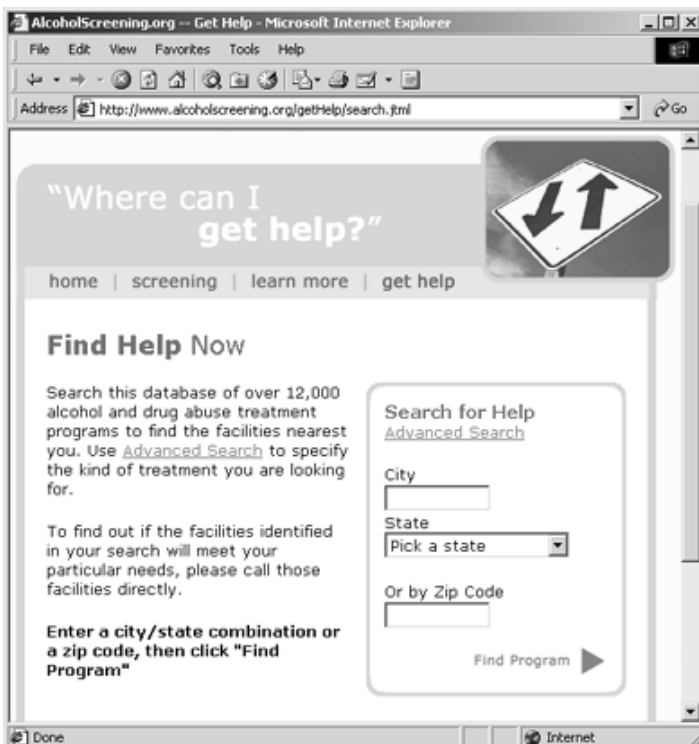


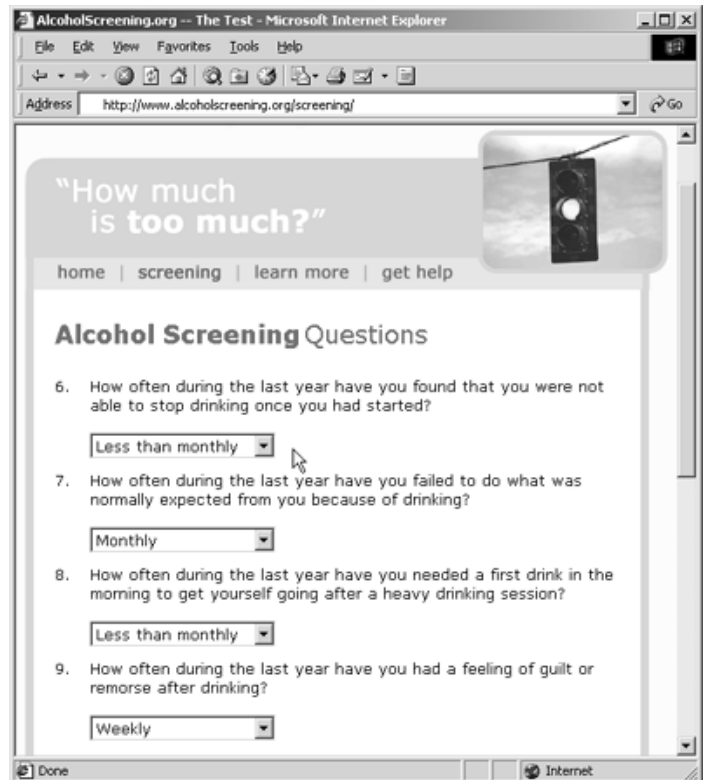
AlcoholScreening.org

- **Take the test:** are your drinking patterns risky, harmful, or within safe limits?
- **Receive** personalized advice about drinking and your health, based on your responses
- **Learn** about alcohol and health, how to recognize a problem, and guidelines for low-risk drinking
- **Find** a local treatment program in a database of 12,000 facilities nationwide
- **Locate** self-help and support resources in your community and on the web

Is my
drinking risky?



How much
is too much?



What is
moderate drinking?

www.alcoholscreening.org



One Appleton St.
Boston, MA 02116 USA
617/437-1500
info@jointogether.org